

Treasury Management Strategy Statement

Minimum Revenue Provision Policy Statement and Annual
Investment Strategy

2026/27

INDEX

1.1	Background	5
1.2	Reporting Requirements	5
1.3	Treasury Management Strategy for 2026/27	6
1.4	Training.....	7
1.5	Treasury Management Consultants	7
2.	THE CAPITAL PRUDENTIAL INDICATORS 2026/27 – 2028/29	9
2.1	Capital Expenditure and Financing	9
2.2	The Council's Borrowing Need (the Capital Financing Requirement).....	9
2.3	Liability Benchmark.....	10
2.4	Core Funds and Expected Investment Balances	11
2.5	Minimum Revenue Provision (MRP) Policy Statement	12
3.	BORROWING	14
3.1	Current Portfolio Position	14
3.2	Treasury Indicators: Limits to Borrowing Activity	15
3.3	Prospects for Interest Rates	16
3.4	Borrowing Strategy	18
3.5	Policy on Borrowing in Advance of Need.....	18
3.6	Rescheduling.....	Error! Bookmark not defined.
3.7	New Financial Institutions as a Source of Borrowing and / or Types of Borrowing (if applicable).....	18
3.8	Approved Sources of Long and Short-term Borrowing.....	19
4	ANNUAL INVESTMENT STRATEGY.....	20
4.1	Investment Policy – Management of Risk	20
4.2	Creditworthiness Policy	21
4.3	Limits	Error! Bookmark not defined.
4.4	Investment Strategy	23
4.5	Investment Performance / Risk Benchmarking.....	24
4.6	End of Year Investment Report	25
4.7	External Fund Managers	Error! Bookmark not defined.
5	APPENDICES	26
5.1	THE CAPITAL PRUDENTIAL AND TREASURY INDICATORS 2026/27 – 2028/29 ...	27
5.2	INTEREST RATE FORECASTS 2025-2028	Error! Bookmark not defined.
5.3	ECONOMIC BACKGROUND (to 13 November 2025)	28
5.4	TREASURY MANAGEMENT PRACTICE (TMP1) – CREDIT AND COUNTERPARTY RISK MANAGEMENT OPTION 1	33
5.5	TREASURY MANAGEMENT PRACTICE (TMP1) – CREDIT AND COUNTERPARTY RISK MANAGEMENT OPTION 2	Error! Bookmark not defined.
5.6	APPROVED COUNTRIES FOR INVESTMENTS	34
5.7	TREASURY MANAGEMENT SCHEME OF DELEGATION.....	35
5.8	THE TREASURY MANAGEMENT ROLE OF THE SECTION 151 OFFICER	36

Key Considerations

2021 revised CIPFA Treasury Management Code and Prudential Code – changes which will impact on future TMSS/AIS reports and the risk management framework.

CIPFA published the revised Codes on 20th December 2021 and stated that revisions need to be included in the reporting framework from the 2023/24 financial year. This Council, therefore, has to have regard to these Codes of Practice when it prepares the Treasury Management Strategy Statement and Annual Investment Strategy, and also related reports during the financial year, which are taken to Full Council for approval.

The revised Treasury Management Code required all investments and investment income to be attributed to one of the following three purposes: -

Treasury management

Arising from the organisation's cash flows or treasury risk management activity, this type of investment represents balances which are only held until the cash is required for use. Treasury investments may also arise from other treasury risk management activity which seeks to prudently manage the risks, costs or income relating to existing or forecast debt or treasury investments.

Service delivery

Investments held primarily and directly for the delivery of public services including housing, regeneration and local infrastructure. Returns on this category of investment which are funded by borrowing are permitted only in cases where the income is "either related to the financial viability of the project in question or otherwise incidental to the primary purpose".

Commercial return

Investments held primarily for financial return with no treasury management or direct service provision purpose. Risks on such investments should be proportionate to a Council's financial capacity – i.e., that 'plausible losses' could be absorbed in budgets or reserves without unmanageable detriment to local services. A Council must not borrow to invest primarily for financial return.

The revised Treasury Management Code requires a Council to implement the following: -

1. **Adopt a liability benchmark treasury indicator** to support the financing risk management of the capital financing requirement; this is to be shown in chart form for a minimum of 10 years, with material differences between the liability benchmark and actual loans to be explained.
2. **Long-term treasury investments**, (including pooled funds), are to be classed as commercial investments unless justified by a cash flow business case.
3. **Pooled funds** are to be included in the indicator for principal sums maturing in years beyond the initial budget year.
4. Amendment to the **knowledge and skills register** for officers and members involved in the treasury management function - to be proportionate to the size and complexity of the treasury management conducted by each Council.
5. **Reporting to members is to be done quarterly.** Specifically, the Chief Finance Officer (CFO) is required to establish procedures to monitor and report performance against all forward-looking prudential indicators at least quarterly. The CFO is expected to establish a measurement and reporting process that highlights significant actual or forecast deviations from the approved indicators. However, monitoring of prudential indicators, including forecast debt and investments, is not required to be taken to Full Council and should be reported as part of the Council's integrated revenue, capital and balance sheet monitoring.

6. **Environmental, social and governance (ESG)** issues to be addressed within a Council's treasury management policies and practices (TMP1).

The main requirements of the Prudential Code relating to service and commercial investments are: -

1. The risks associated with service and commercial investments should be proportionate to their financial capacity – i.e. that plausible losses could be absorbed in budgets or reserves without unmanageable detriment to local services.
2. A Council must not borrow to invest for the primary purpose of commercial return.
3. It is not prudent for local authorities to make any investment or spending decision that will increase the CFR, and so may lead to new borrowing, unless directly and primarily related to the functions of the Council, and where any commercial returns are either related to the financial viability of the project in question or otherwise incidental to the primary purpose.
4. An annual review should be conducted to evaluate whether commercial investments should be sold to release funds to finance new capital expenditure or refinance maturing debt.
5. A prudential indicator is required for the net income from commercial and service investments as a proportion of the net revenue stream.
6. Create new Investment Management Practices to manage risks associated with non-treasury investments, (similar to the current Treasury Management Practices).

A Council's Capital Strategy or Annual Investment Strategy should include: -

1. The Council's approach to investments for service or commercial purposes (together referred to as non-treasury investments), including defining the Council's objectives, risk appetite and risk management in respect of these investments, and processes ensuring effective due diligence.
2. An assessment of affordability, prudence and proportionality in respect of the Council's overall financial capacity (i.e., whether plausible losses could be absorbed in budgets or reserves without unmanageable detriment to local services).
3. Details of financial and other risks of undertaking investments for service or commercial purposes and how these are managed.
4. Limits on total investments for service purposes and for commercial purposes respectively (consistent with any limits required by other statutory guidance on investments).
5. Requirements for independent and expert advice and scrutiny arrangements (while business cases may provide some of this material, the information contained in them will need to be periodically re-evaluated to inform the Council's overall strategy).
6. State compliance with paragraph 51 of the Prudential Code in relation to investments for commercial purposes, in particular the requirement that a Council must not borrow to invest primarily for financial return.

As this TMSS and AIS deals solely with treasury management investments, the categories of service delivery and commercial investments should be addressed as part of the Capital Strategy section of the Budget Report.

1.1 Background

The Council is required to operate a balanced revenue budget, which broadly means that cash raised during the year will meet cash expenditure. Part of the treasury management operation is to ensure that this cash flow is adequately planned, with cash being available when it is needed. Surplus monies are invested in low-risk counterparties or instruments commensurate with the Council's low risk appetite, providing adequate liquidity initially before considering investment return.

The second main function of the treasury management service is the funding of the Council's capital plans. These capital plans provide a guide to the borrowing need of the Council, essentially the longer-term cash flow planning, to ensure that it can meet its capital spending obligations. This management of longer-term cash may involve arranging long or short-term loans or using longer-term cash flow surpluses. On occasion, when it is prudent and economic, any debt previously drawn may be restructured to meet risk or cost objectives.

The contribution the treasury management function makes to the Council is critical, as the balance of debt and investment operations ensure liquidity or the ability to meet spending commitments as they fall due, either on day-to-day revenue or for larger capital projects. The treasury operations will see a balance of the interest costs of debt and the investment income arising from cash deposits affecting the available budget. Since cash balances generally result from reserves and balances, it is paramount to ensure adequate security of the sums invested, as a loss of principal will in effect result in a loss to the General Fund Balance.

CIPFA defines treasury management as:

"The management of the local Council's borrowing, investments and cash flows, including its banking, money market and capital market transactions; the effective control of the risks associated with those activities; and the pursuit of optimum performance consistent with those risks."

Whilst any commercial initiatives or loans to third parties will impact on the treasury function, these activities are generally classed as non-treasury activities, (arising usually from capital expenditure), and are separate from the day-to-day treasury management activities.

1.2 Reporting Requirements

1.2.1 Capital Strategy

The CIPFA 2021 Prudential and Treasury Management Codes require all local authorities to prepare a Capital Strategy report which will provide the following: -

- a high-level long-term overview of how capital expenditure, capital financing and treasury management activity contribute to the provision of services
- an overview of how the associated risk is managed
- the implications for future financial sustainability

The aim of the strategy is to ensure that all the Council's elected members fully understand the overall long-term policy objectives and resulting Capital Strategy requirements, governance procedures and risk appetite.

1.2.2 Treasury Management Reporting

The Council is currently required to receive and approve, as a minimum, three main treasury reports each year, which incorporate a variety of policies, estimates and actuals.

- a. **Prudential and treasury indicators and treasury strategy** (this report) - The first, and most important report is forward looking and covers: -
 - the capital plans, (including prudential indicators)
 - a minimum revenue provision (MRP) policy, (how residual capital expenditure is charged to revenue over time)
 - the Treasury Management Strategy, (how the investments and borrowings are to be organised), including treasury indicators; and
 - an Annual Investment Strategy, (the parameters on how investments are to be managed)
- b. **A mid-year treasury management report** – This is primarily a progress report and will update members on the capital position, amending prudential indicators as necessary, and whether any policies require revision. In addition, this Council will receive quarterly update reports.
- c. **An annual treasury report** – This is a backward-looking review document and provides details of a selection of actual prudential and treasury indicators and actual treasury operations compared to the estimates within the strategy.

Scrutiny

The above reports are required to be adequately scrutinised before being recommended to the Full Council. This role is undertaken by the Finance and Assets Committee.

Quarterly reports – In addition to the three major reports detailed above, from 2023/24 quarterly reporting (end of June/end of December) has also been required. However, these additional reports do not have to be reported to Full Council/Board but do require to be adequately scrutinised. This role is undertaken by the Finance and Assets Committee. (The reports, specifically, should comprise updated Treasury/Prudential Indicators.)

1.3 Treasury Management Strategy for 2026/27

The strategy for 2026/27 covers two main areas:

Capital issues

- the capital expenditure plans and the associated prudential indicators
- the minimum revenue provision (MRP) policy

Treasury management issues

- the current treasury position
- treasury indicators which limit the treasury risk and activities of the Council
- prospects for interest rates
- the borrowing strategy
- policy on borrowing in advance of need
- the investment strategy
- creditworthiness policy; and
- the policy on use of external service providers

These elements cover the requirements of the Local Government Act 2003, MHCLG Investment Guidance, MHCLG MRP Guidance, the CIPFA Prudential Code and the CIPFA Treasury Management Code.

1.4 Training

The CIPFA Treasury Management Code requires the responsible officer to ensure that members with responsibility for treasury management receive adequate training in treasury management. This especially applies to members responsible for scrutiny.

Furthermore, pages 47 and 48 of the Code state that they expect “all organisations to have a formal and comprehensive knowledge and skills or training policy for the effective acquisition and retention of treasury management knowledge and skills for those responsible for management, delivery, governance and decision making.

The scale and nature of this will depend on the size and complexity of the organisation’s treasury management needs. Organisations should consider how to assess whether treasury management staff and board/ council members have the required knowledge and skills to undertake their roles and whether they have been able to maintain those skills and keep them up to date.

As a minimum, authorities should carry out the following to monitor and review knowledge and skills:

- Record attendance at training and ensure action is taken where poor attendance is identified.
- Prepare tailored learning plans for treasury management officers and board/council members.
- Require treasury management officers and board/council members to undertake self-assessment against the required competencies (as set out in the schedule that may be adopted by the organisation).
- Have regular communication with officers and board/council members, encouraging them to highlight training needs on an ongoing basis.”

In further support of the revised training requirements, CIPFA’s Better Governance Forum and Treasury Management Network have produced a ‘self-assessment by members responsible for the scrutiny of treasury management’, which is available from the CIPFA website to download.

Following the elections in May 2023, a Treasury Management training session was offered to all Members as part of the induction. This took place on the 5th October 2023 and was hosted by Fifield Training Limited.

The training needs of treasury management officers are periodically reviewed. Two members of the team, including the Director Finance, attended a training session on the 19th November 2025.

A formal record of the training received by officers central to the Treasury function will be maintained by the Director, Finance. Similarly, a formal record of the treasury management/capital finance training received by members will also be maintained by Director, Finance.

1.5 Treasury Management Consultants

The Council uses MUFG Corporate Markets as its external treasury management advisors.

The Council recognises that responsibility for treasury management decisions remains with the organisation at all times and will ensure that undue reliance is not placed upon the services of our external service providers. All decisions will be undertaken with regards to all available information, including, but not solely, our treasury advisers.

It also recognises that there is value in employing external providers of treasury management services to acquire access to specialist skills and resources. The Council will ensure that the terms

of their appointment and the methods by which their value will be assessed are properly agreed and documented and subjected to regular review.

2. THE CAPITAL PRUDENTIAL INDICATORS 2026/27 – 2028/29

The Council's capital expenditure plans are the key driver of treasury management activity. The output of the capital expenditure plans is reflected in the prudential indicators, which are designed to assist members' overview and confirm capital expenditure plans are prudent, affordable and sustainable.

2.1 Capital Expenditure and Financing

This prudential indicator is a summary of the Council's capital expenditure plans, both those agreed previously, and those forming part of this budget cycle. Members are asked to approve the capital expenditure forecasts: -

Capital expenditure £000	2024/25 Actual	2025/26 Estimate	2026/27 Estimate	2027/28 Estimate	2028/29 Estimate
Operational Services	1,869	15,087	3,475	1,423	912
Finance & Assets	110	381	0	0	0
F&A – Loan to ECTC	1,675	2,700	4,000	0	0
Total	3,654	18,168	7,475	1,423	912

The table below summarises the above capital expenditure plans and how these plans are being financed by capital or revenue resources. Any shortfall of resources results in a funding borrowing need.

Financing of capital expenditure £000	2024/25 Actual	2025/26 Estimate	2026/27 Estimate	2027/28 Estimate	2028/29 Estimate
Capital Grant	637	2,017	603	603	603
Section 106 / CIL	1,954	10,359	3,083	750	600
Capital Reserves	74	337	210	210	210
Revenue	0	0	0	0	0
Net financing need for the year	988	5,455	3,579	(140)	(501)

2.2 The Council's Borrowing Need (the Capital Financing Requirement)

The second prudential indicator is the Council's Capital Financing Requirement (CFR). The CFR is simply the total historic outstanding capital expenditure which has not yet been paid for from either revenue or capital resources. It is essentially a measure of the Council's indebtedness and so its underlying borrowing need. Any capital expenditure above, which has not immediately been paid for through a revenue or capital resource, will increase the CFR.

The CFR does not increase indefinitely, as the minimum revenue provision (MRP) is a statutory annual revenue charge which broadly reduces the indebtedness in line with each asset's life and so charges the economic consumption of capital assets as they are used.

The CFR includes any other long-term liabilities (e.g., PFI schemes, leases). Whilst these increase the CFR, and therefore the Council's borrowing requirement, these types of schemes include a borrowing facility by the PFI, PPP lease provider and so the Council is not required to separately borrow for these schemes. The Council currently has £XXm of such schemes within the CFR.

The Council is asked to approve the CFR projections below:

£000	2024/25 Actual	2025/26 Estimate	2026/27 Estimate	2027/28 Estimate	2028/29 Estimate
Capital Financing Requirement					
CFR Brought forward	10,652	10,197	12,461	13,225	6,206
Movement in CFR in year	(455)	2,264	764	(7,019)	(768)
Total CFR at yearend	10,197	12,461	13,225	6,206	5,438

Movement in CFR represented by					
Net financing need for the year (above)	988	5,455	3,580	(140)	(500)
Less MRP	(593)	(585)	(941)	(411)	(268)
Less Repayment of previous loan to ECTC	(850)	(2,605)	(1,876)	(6,468)	0
Movement in CFR	(455)	2,265	763	(7,019)	(768)

Borrowing £000	2024/25 Actual	2025/26 Estimate	2026/27 Estimate	2027/28 Estimate	2028/29 Estimate
Service spend	(796)	2,474	(420)	(140)	(500)
Housing	1,785	2,981	4,000	0	0
TOTAL	989	5,455	3,580	(140)	(500)

2.3 Liability Benchmark

The Council is required to estimate and measure the Liability Benchmark (LB) for the forthcoming financial year and the following two financial years, as a minimum.

There are four components to the LB: -

1. **Existing loan debt outstanding:** the Council's existing loans that are still outstanding in future years.
2. **Loans CFR:** this is calculated in accordance with the loans CFR definition in the Prudential Code and projected into the future based on approved prudential borrowing and planned MRP.
3. **Net loans requirement:** this will show the Council's gross loan debt less treasury management investments at the last financial year-end, projected into the future and based on its approved prudential borrowing, planned MRP and any other major cash flows forecast.
4. **Liability benchmark** (or gross loans requirement): this equals net loans requirement plus short-term liquidity allowance.

Liability Benchmark £000	2024/25 Actual	2025/26 Estimate	2026/27 Estimate	2027/28 Estimate	2028/29 Estimate
External Debt	0	0	0	0	0
Treasury Investments	(32,288)	(27,253)	(21,762)	(22,633)	(13,594)
Internal Borrowing	(10,197)	(12,462)	(13,225)	(6,206)	(5,438)
Net Loan Requirement	(42,485)	(39,715)	(34,987)	(28,839)	(19,032)
Capital Financing Requirement	10,197	12,462	13,225	6,206	5,438
Liquidity Allowance / Buffer	3,000	3,000	3,000	3,000	3,000
Liability Benchmark / Gross Loan Requirement	(29,288)	(24,253)	(18,762)	(19,633)	(10,594)

2.4 Core Funds and Expected Investment Balances

The application of resources (capital receipts, reserves etc.) to either finance capital expenditure or other budget decisions to support the revenue budget will have an ongoing impact on investments unless resources are supplemented each year from new sources (asset sales etc.). Detailed below are estimates of the year-end balances for each resource and anticipated day-to-day cash flow balances.

Year End Resources £000	2024/25 Actual	2025/26 Estimate	2026/27 Estimate	2027/28 Estimate	2028/29 Estimate
Revenue Reserves	17,632	16,941	13,431	9,810	7,289
S106 / CIL	17,669	7,810	5,228	5,128	5,028
Capital receipts	1,759	1,275	1,876	6,468	50
Provisions	1,227	1,066	1,066	1,066	1,066
Council Tax / NNDR Surplus	1,425				
Total core funds	39,712	27,092	21,601	22,472	13,433
Working capital	2,773	2,773	2,773	2,773	2,773
Internal Borrowing	(10,197)	(12,462)	(13,225)	(6,206)	(5,438)
Expected investments	32,288	17,403	11,149	19,039	10,769

Working capital balances shown are estimated year-end; these may be higher mid-year

2.5 Minimum Revenue Provision (MRP) Policy Statement

Under Regulation 27 of the Local Authorities (Capital Finance and Accounting) (England) Regulations 2003, where the Council has financed capital expenditure by borrowing it is required to make a provision each year through a revenue charge (MRP). The 2003 Regulations have been further amended with full effect from April 2025 to expressly provide that in determining a prudent provision local authorities cannot exclude any amount of CFR from its calculation, unless by an exception set out in statute.

The Council is required to calculate a prudent provision of MRP which ensures that the outstanding debt liability is repaid over a period that is reasonably commensurate with that over which the capital expenditure provides benefits. The MRP Guidance (2024) provides four ready-made options for calculating MRP. A Council can use a mix of these options if it considers it appropriate to do so.

The Government considers that the methods of making prudent provision include the options set out in the statutory guidance. However, this does not rule out or otherwise preclude a Council from using an alternative method should it decide that is more appropriate. Any method used is subject to the conditions in paragraphs 61 to 65 of the guidance as far as these are relevant.

To ensure transparency and accountability, as a minimum, the MRP Policy Statement should set out the policy for the following:

- The Council's policy to provide MRP, the major assumptions applied, and the methodologies used.
- Any changes to the policy or methodologies from the prior year with an explanation of the rationale and financial impact.
- How the Council has considered the requirements set out in statute and the guidance to ensure it is meeting its duty to make prudent provision.
- A description of any departures from the guidance and an explanation of why the approach adopted results in a more prudent charge.
- Details as to how capital receipts will be used to reduce indebtedness and the impact on the MRP charge.
- An explanation of where MRP is not being made with respect to any amount of CFR and the statutory basis for this; and
- The detail of any planned voluntary overpayment of MRP.

The MRP policy statement requires full council approval (or closest equivalent level) in advance of each financial year.

The Council is recommended to approve the following MRP Statement.

For all unsupported borrowing the Council's MRP policy will be **Asset life method (straight line)**:

- | | |
|---|----------|
| • Waste Fleet purchased prior to 2023/24 | 9 years |
| • Waste Fleet purchased in 2023/24 and future years | 7 years |
| • Other Fleet | 9 years |
| • Leisure Centre | 25 years |
| • Depot | 25 years |
| • Waste Bins | 25 years |

Regulation 27(3) allows a local Council to charge MRP in the financial year following the one in which capital expenditure financed by debt was incurred.

Capital expenditure financed by borrowing in 2025/26 will not be subject to an MRP charge until 2026/27, or in the financial year following the one in which the asset first becomes available for use.

Capital loans

Regulation 27(4) allows a local Council to exclude capital loans that are financed by debt from the requirement to make MRP, provided the loan is not a commercial loan. A commercial loan is defined in regulation 27(5) as a loan from the Council to another entity for a purpose which, if the Council were to undertake itself, would be primarily for financial return; or, where the loan is itself, capital expenditure undertaken primarily for financial return. Local authorities must make MRP with respect to any debt used to finance a commercial capital loan.

A local Council may choose not to charge MRP in respect of the financing by debt of a loan issued by a Council to any person or body, where —

- (a) the loan is treated as capital expenditure in accordance with regulation 25(1)(b),
- (b) the loan is not a commercial loan, and
- (c) the local Council has not recognised, in accordance with proper practices, any expected or actual credit loss in respect of that loan.

- Loans to ECTC and ECCLT - For capital expenditure on loans to third parties where the principal will be repaid at the end of the loan period, this loan repayment will be used to reduce the CFR at the point of repayment and no MRP will be paid against the capital expenditure in the intervening period. This is consistent with the table in 2.2 above.

MRP Overpayments

Under the MRP guidance, charges made in excess of the statutory MRP can be made and are known as voluntary revenue provision (VRP).

VRP can be reclaimed in later years if deemed necessary or prudent. In order for these amounts to be reclaimed for use in the budget, this policy must disclose the cumulative overpayment made each year.

Cumulative VRP overpayments made to 31.03.25 are £0.810m.

3. BORROWING

The capital expenditure plans set out in Section 2 provide details of the service activity of the Council. The treasury management function ensures that the Council's cash is organised in accordance with the relevant professional codes, so that sufficient cash is available to meet this service activity and the Council's Capital Strategy. This will involve both the organisation of the cash flow and, where capital plans require, the organisation of appropriate borrowing facilities. The strategy covers the relevant treasury / prudential indicators, the current and projected debt positions, and the Annual Investment Strategy.

3.1 Current Portfolio Position

The overall treasury management portfolio as at 31.3.2025 and for the position as at 31.12.2025 is shown below for both borrowing and investments.

	TREASURY PORTFOLIO			
	actual 31.3.25	actual 31.3.25	current 31.12.25	current 31.12.25
Treasury Investments	£0	%	£0	%
Banks – main bank account	187	0.6	145	0.4
Bank – call accounts	22,101	68.4	23,000	61.2
Money Market Funds	10,000	31.0	14,450	38.4
Total Treasury Investments	32,288	100	37,595	100
Total External Borrowing	0	0	0	0
Net Treasury Investments / (Borrowing)	32,288	100	37,595	100

The Council's forward projections for borrowing are summarised below. The table shows the actual external debt, against the underlying capital borrowing need, (the Capital Financing Requirement - CFR), highlighting any over or under borrowing.

£000	2024/25 Actual	2025/26 Estimate	2026/27 Estimate	2027/28 Estimate	2028/29 Estimate
External Debt					
Debt at 1 April	0	0	0	0	0
Expected change in Debt	0	0	0	0	0
Actual gross external debt at 31 March	0	0	0	0	0
The Capital Financing Requirement	10,197	12,462	13,225	6,206	5,438
Under / (over) borrowing	10,197	12,462	13,225	6,206	5,438

Within the range of prudential indicators there are several key indicators to ensure that the Council operates its activities within well-defined limits. One of these is that the Council needs to ensure that its gross debt does not, except in the short-term, exceed the total of the CFR in the preceding year plus the estimates of any additional CFR for 2026/27 and the following two financial years. This allows some flexibility for limited early borrowing for future years but ensures that borrowing is not undertaken for revenue or speculative purposes.

The Director of Finance reports that the Council complied with this prudential indicator in the current year and does not envisage difficulties for the future. This view takes account of current commitments, existing plans and the proposals in this budget report.

3.2 Treasury Indicators: Limits to Borrowing Activity

The Operational Boundary. This is the limit beyond which external debt is not normally expected to exceed. In most cases, this would be a similar figure to the CFR but may be lower or higher depending on the levels of actual debt and the ability to fund under-borrowing by other cash resources.

Operational Boundary £000	2024/25 Estimate	2025/26 Estimate	2026/27 Estimate	2027/28 Estimate	2028/29 Estimate
External Debt	0	0	0	0	0

The Authorised Limit for external debt. This is a key prudential indicator and represents a control on the maximum level of borrowing. This represents a legal limit beyond which external debt is prohibited, and this limit needs to be set or revised by the Full Council. It reflects the level of external debt which, while not desired, could be afforded in the short-term, but is not sustainable in the longer-term.

- This is the statutory limit determined under section 3 (1) of the Local Government Act 2003. The Government retains an option to control either the total of all local Council plans, or those of a specific Council, although this power has not yet been exercised.
- The Council is asked to approve the following Authorised Limit:

Authorised Limit £000	2024/25 Estimate	2025/26 Estimate	2026/27 Estimate	2027/28 Estimate	2028/29 Estimate
Debt	10,000	8,000	8,000	8,000	8,000

To note: In normal circumstances a Council's Authorised Limit for external debt is higher than its Capital Financing Requirement, however in our case, I have put this as a lower value on the basis that Borrowing will be from internal sources in the first instance, therefore reducing significantly the need to borrow from external sources.

3.3 Prospects for Interest Rates

The Council has appointed MUFG Corporate Markets as its treasury advisor and part of their service is to assist the Council to formulate a view on interest rates. MUFG Corporate Markets provided the following forecasts on 22 December 2025. These are forecasts for Bank Rate, average earnings and PWLB certainty rates, gilt yields plus 80 bps.

MUFG Corporate Markets Interest Rate View 22.12.25													
	Mar-26	Jun-26	Sep-26	Dec-26	Mar-27	Jun-27	Sep-27	Dec-27	Mar-28	Jun-28	Sep-28	Dec-28	Mar-29
BANK RATE	3.75	3.50	3.50	3.25	3.25	3.25	3.25	3.25	3.25	3.25	3.25	3.25	3.25
3 month ave earnings	3.80	3.50	3.50	3.30	3.30	3.30	3.30	3.30	3.30	3.30	3.30	3.30	3.30
6 month ave earnings	3.80	3.50	3.50	3.40	3.30	3.30	3.30	3.40	3.40	3.40	3.40	3.40	3.40
12 month ave earnings	3.90	3.60	3.60	3.50	3.40	3.50	3.50	3.50	3.50	3.50	3.60	3.60	3.60
5 yr PWLB	4.60	4.50	4.30	4.20	4.10	4.10	4.10	4.10	4.10	4.10	4.10	4.10	4.10
10 yr PWLB	5.20	5.00	4.90	4.80	4.80	4.70	4.70	4.70	4.60	4.60	4.60	4.60	4.70
25 yr PWLB	5.80	5.70	5.60	5.50	5.50	5.40	5.30	5.30	5.30	5.20	5.20	5.20	5.20
50 yr PWLB	5.60	5.50	5.40	5.30	5.30	5.20	5.10	5.10	5.10	5.00	5.10	5.00	5.00

Additional notes by MUFG Corporate Markets on this forecast table: -

- Our last interest rate forecast update was undertaken on 11 August. Since then, a combination of tepid growth (0.2% q/q GDP for Q2 and 0.1% q/q GDP for Q3), falling inflation (currently CPI is 3.2%), and a November Budget that will place more pressure on the majority of households' income, has provided an opportunity for the Bank of England's Monetary Policy Committee to further reduce Bank Rate from 4% to 3.75% on 18 December.
- Surprisingly, to most market commentators, the recent steep fall in CPI inflation in one month from 3.6% to 3.2% did not persuade most "dissenters" from the November vote (Lombardelli, Greene, Mann and Pill) to switch to the rate-cutting side of the Committee. Instead, it was left to Bank Governor, Andrew Bailey, to use his deciding vote to force a rate cut through by the slimmest of margins, 5-4.
- Given the wafer-thin majority for a rate cut it was not unexpected to hear that although rates would continue on a "gradual downward path", suggesting a further rate cut or cuts in the offing, MPC members want to assess incoming evidence on labour market activity and wage growth. Indeed, with annual wage growth still over 4.5%, the MPC reiterated that the case for further rate cuts would be "a closer call", and Governor Bailey observed there is "limited space as Bank Rate approaches a neutral level".
- Accordingly, the MUFG Corporate Markets forecast has been revised to price in a rate cut in Q2 2026 to 3.5%, likely to take place in the wake of a significant fall in the CPI inflation reading from 3% in March to 2% in April (as forecast by Capital Economics), followed by a short lull through the summer whilst more data is garnered, and then a further rate cut to 3.25% in Q4.
- As in August, nonetheless, threats to that central scenario abound. What if wage increases remain stubbornly high? There are, after all, several sectors of the domestic economy, including social care provision and the building/construction industries, where staff shortages remain severe. Moreover, by May 2026, following the local elections, we will have a better handle on whether or not the Starmer/Reeves team is going to see out the current Parliament or whether they face a Leadership challenge from within their own party. If so, how will gilt markets react to these variables...and will there be additional geo-political factors to also bake in, particularly the Fed's monetary policy decisions in 2026 and the ongoing battle to lower rates whilst inflation remains close to 3%.
- Accordingly, our updated central forecast is made with several hefty caveats. We are confident, as we have been for some time, that our forecast for Bank Rate and the 5-year PWLB Certainty Rate is robust, and we have marginally brought forward the timing of the next rate cut(s). But for the 10-, 25- and 50-years part of the curve, the level of gilt issuance, and the timing of its placement, will be integral to achieving a benign trading environment. That is not a "given", and additionally, the inflation outlook and political factors domestically and, crucially, in the US,

are also likely to hold sway. Matters should be clearer by June in the UK, but the US mid-term elections are scheduled for November.

- Our revised PWLB rate forecasts are based on the Certainty Rate (the standard rate minus 20 bps) which has been accessible to most authorities since 1 November 2012. Please note, the lower Housing Revenue Account (HRA) PWLB rate started on 15 June 2023 for those authorities with an HRA (standard rate minus 60 bps) and is set to prevail until at least the end of March 2026. Hopefully, there will be a further extension to this discounted rate announced in January.
- Money market yield forecasts are based on expected average earnings by local authorities for 3 to 12 months.

Gilt yields and PWLB rates

The overall longer-run trend is for gilt yields and PWLB rates to fall back over the timeline of our forecasts, but the risks to our forecasts are generally to the upsides. Our target borrowing rates are set **two years forward** (as we expect rates to fall back) and the current PWLB (certainty) borrowing rates are set out below: -

PWLB borrowing	Current borrowing rates as at 22.12.25 p.m. %	Target borrowing rate now (end of Q4 2027) %	Target borrowing rate previous (end of Q4 2027) %
5 years	4.81	4.10	4.20
10 years	5.39	4.70	4.70
25 years	6.01	5.30	5.30
50 years	5.78	5.10	5.10

Borrowing advice: Our long-term (beyond 10 years) forecast for the neutral level of Bank Rate remains at 3.5%. As all PWLB certainty rates are still above this level, borrowing strategies will need to be reviewed in that context. Overall, better value can be obtained at the shorter end of the curve (<5 years PWLB maturity/<10 years PWLB EIP) and short-dated fixed LA to LA monies should also be considered. Temporary borrowing rates will, generally, fall in line with Bank Rate cuts.

Our suggested **budgeted earnings rates for investments** up to about three months' duration in each financial year are set out below.

Average earnings in each year	Now %	Previously %
2025/26 (residual)	3.80	3.90
2026/27	3.40	3.60
2027/28	3.30	3.30
2028/29	3.30	3.50
2029/30	3.50	3.50
Years 6-10	3.50	3.50
Years 10+	3.50	3.50

We will continue to monitor economic and market developments as they unfold. Typically, we formally review our forecasts following the quarterly release of the Bank of England's Monetary Policy Report but will consider our position on an ad-hoc basis as required.

Our interest rate forecast for Bank Rate is in steps of 25 bps, whereas PWLB forecasts have been rounded to the nearest 10 bps and are central forecasts within bands of + / - 25 bps. Naturally, we continue to monitor events and will update our forecasts as and when appropriate.

3.4 Borrowing Strategy

The Council is currently maintaining an under-borrowed position. This means that the capital borrowing need, (the Capital Financing Requirement), has not been fully funded with loan debt as cash supporting the Council's reserves, balances and cash flow has been used as a temporary measure. This strategy is prudent as medium and longer dated borrowing rates are expected to fall from their current levels, albeit only once prevailing inflation concerns are addressed by restrictive near-term monetary policy. That is, Bank Rate remains relatively elevated in 2026 even if further rate cuts arise.

Against this background and the risks within the economic forecast, caution will be adopted with the 2026/27 treasury operations. The Director of Finance will monitor interest rates in financial markets and adopt a pragmatic approach to changing circumstances:

- *if it was felt that there was a significant risk of a sharp FALL in borrowing rates, then borrowing will be postponed.*
- *if it was felt that there was a significant risk of a much sharper RISE in borrowing rates than that currently forecast, fixed rate funding will be drawn whilst interest rates are lower than they are projected to be in the next few years.*

Any decisions will be reported to the appropriate decision-making body at the next available opportunity.

3.5 Policy on Borrowing in Advance of Need

The Council will not borrow more than or in advance of its needs purely in order to profit from the investment of the extra sums borrowed. Any decision to borrow in advance will be within forward approved Capital Financing Requirement estimates and will be considered carefully to ensure that value for money can be demonstrated, and that the Council can ensure the security of such funds.

3.6 New Financial Institutions as a Source of Borrowing and / or Types of Borrowing

Currently the PWLB Certainty Rate is set at gilts + 80 basis points. However, consideration may still need to be given to sourcing funding from the following sources for the following reasons:

- Local authorities (primarily shorter dated maturities out to 3 years or so – generally still cheaper than the Certainty Rate).
- Financial institutions (primarily insurance companies and pension funds but also some banks, and sometimes out of forward dates where the objective is to avoid a “cost of carry” or to achieve refinancing certainty over the next few years).
- UK National Wealth Fund

Our advisors will keep us informed as to the relative merits of each of these alternative funding sources.

3.7 Approved Sources of Long and Short-term Borrowing

On Balance Sheet	Fixed	Variable
PWLB	●	●
Local Authorities	●	●
Banks	●	●
Pension Funds	●	●
Insurance Companies	●	●
UK National Wealth Fund	●	●
Internal (capital receipts & revenue balances)	●	●

4 ANNUAL INVESTMENT STRATEGY

4.1 Investment Policy – Management of Risk

The Ministry of Housing, Communities and Local Government (MHCLG)) and CIPFA have extended the meaning of ‘investments’ to include both financial and non-financial investments. This report deals solely with treasury (financial) investments, (as managed by the treasury management team). Non-financial investments, essentially the purchase of income yielding assets and service investments, are covered in the Capital Strategy, (a separate report).

The Council's investment policy has regard to the following: -

- MHCLG's Guidance on Local Government Investments (“the Guidance”)
- CIPFA Treasury Management in Public Services Code of Practice and Cross Sectoral Guidance Notes 2021 (“the Code”)
- CIPFA Treasury Management Guidance Notes 2021

The Council's investment priorities will be security first, portfolio liquidity second and then yield (return). The Council will aim to achieve the optimum return (yield) on its investments commensurate with proper levels of security and liquidity and with regard to the Council's risk appetite.

In the current economic climate, it is considered appropriate to maintain a degree of liquidity to cover cash flow needs but to also consider “laddering” investments for periods up to 12 months with high credit rated financial institutions, whilst investment rates remain elevated, as well as wider range fund options.

The above guidance from MHCLG and CIPFA places a high priority on the management of risk. This Council has adopted a prudent approach to managing risk and defines its risk appetite by the following means: -

1. Minimum acceptable **credit criteria** are applied in order to generate a list of highly creditworthy counterparties. This also enables diversification and thus avoidance of concentration risk. The key ratings used to monitor counterparties are the short-term and long-term ratings.
2. **Other information:** ratings will not be the sole determinant of the quality of an institution; it is important to continually assess and monitor the financial sector on both a micro and macro basis and in relation to the economic and political environments in which institutions operate. The assessment will also take account of information that reflects the opinion of the markets. To achieve this consideration the Council will engage with its advisors to maintain a monitor on market pricing such as “**credit default swaps**” and overlay that information on top of the credit ratings.
3. **Other information sources** used will include the financial press, share price and other such information pertaining to the financial sector in order to establish the most robust scrutiny process on the suitability of potential investment counterparties.
4. This Council has defined the list of **types of investment instruments** that the treasury management team are authorised to use. There are two lists in Appendix 5.4 under the categories of ‘specified’ and ‘non-specified’ investments.

Specified investments are those with a high level of credit quality and subject to a maturity limit of one year or have less than a year left to run to maturity, if originally they were classified as being non-specified investments solely due to the maturity period exceeding one year.

Non-specified investments are those with less high credit quality, may be for periods in excess of one year, and/or are more complex instruments which require greater consideration by members and officers before being authorised for use.

5. **Lending limits**, (amounts and maturity), for each counterparty will be set through applying the matrix table in paragraph 4.2.
6. **Transaction limits** are set for each type of investment in 4.2.
7. This Council will set a limit for its investments which are invested for **longer than 365 days**, (see paragraph 4.4).
8. Investments will only be placed with counterparties from countries with a specified minimum **sovereign rating**, (see paragraph 4.3).
9. This Council has engaged **external consultants**, (see paragraph 1.5), to provide expert advice on how to optimise an appropriate balance of security, liquidity and yield, given the risk appetite of this Council in the context of the expected level of cash balances and need for liquidity throughout the year.
10. All investments will be denominated in **sterling**.
11. As a result of the change in accounting standards under IFRS 9, this Council will consider the implications of investment instruments which could result in an adverse movement in the value of the amount invested and resultant charges at the end of the year to the General Fund. (In November 2018, the MHCLG, concluded a consultation for a temporary override to allow English local authorities time to adjust their portfolio of pooled investments by announcing a statutory override to delay implementation of IFRS 9 for five years ending 31.3.23. Subsequently, a further extension to the override to **31.3.29** was agreed by Government but only for those pooled investments made before 1st April 2024.

However, this Council will also pursue **value for money** in treasury management and will monitor the yield from investment income against appropriate benchmarks for investment performance, (see paragraph 4.5). Regular monitoring of investment performance will be carried out during the year.

Changes in risk management policy from last year.

The above criteria are unchanged from last year.

4.2 Creditworthiness Policy

This Council applies the creditworthiness service provided by the MUFG Corporate Markets. This service employs a sophisticated modelling approach utilising credit ratings from the three main credit rating agencies - Fitch, Moody's and Standard & Poor's. The credit ratings of counterparties are supplemented with the following overlays: -

1. "watches" and "outlooks" from credit rating agencies;
2. CDS spreads that may give early warning of changes in credit ratings;
3. sovereign ratings to select counterparties from only the most creditworthy countries.

This modelling approach combines credit ratings, and any assigned Watches and Outlooks, in a weighted scoring system which is then combined with an overlay of CDS spreads. The end-product of this is a series of colour coded bands which indicate the relative creditworthiness of counterparties. These colour codes are used by the Council to determine the suggested duration for investments. The Council will, therefore, use counterparties within the following durational bands:

- Yellow 5 years *
- Dark pink 5 years for Ultra-Short Dated Bond Funds with a credit score of 1.25
- Light pink 5 years for Ultra-Short Dated Bond Funds with a credit score of 1.5

- Purple 2 years
- Blue 1 year (only applies to nationalised or semi nationalised UK Banks)
- Orange 1 year
- Red 6 months
- Green 100 days
- No colour not to be used

The MUFG Corporate Markets creditworthiness service uses a wider array of information other than just primary ratings. Furthermore, by using a risk weighted scoring system, it does not give undue preponderance to just one agency's ratings.

Typically, the minimum credit ratings criteria the Council uses will be a short-term rating (Fitch or equivalents) of F1 and a long-term rating of A-. There may be occasions when the counterparty ratings from one rating agency are marginally lower than these ratings but may still be used. In these instances, consideration will be given to the whole range of ratings available, or other topical market information, to support their use.

All credit ratings will be monitored weekly. The Council is alerted to changes to ratings of all three agencies through its use of the MUFG Corporate Markets creditworthiness service.

- if a downgrade results in the counterparty / investment scheme no longer meeting the Council's minimum criteria, its further use as a new investment will be withdrawn immediately.
- in addition to the use of credit ratings the Council will be advised of information in movements in Credit Default Swap spreads against the iTraxx European Senior Financials benchmark and other market data on a daily basis via its Passport website, provided exclusively to it by MUFG Corporate Markets. Extreme market movements may result in the downgrade of an institution or removal from the Council's lending list.

Sole reliance will not be placed on the use of this external service. In addition, this Council will also use market data and market information, as well as information on any external support for banks to help its decision-making process.

Y	Pi1	Pi2	P	B	O	R	G	N/C
1	1.25	1.5	2	3	4	5	6	7
Up to 5yrs	Up to 5yrs	Up to 5yrs	Up to 2yrs	Up to 1yr	Up to 1yr	Up to 6mths	Up to 100days	No Colour

The following counterparty limits were agreed in the 2021/22 Treasury Management Strategy and will remain in place during 2026/27.

- £6 million with counterparties rated up to six months (red or above on the scale) and above time duration limit on the approved weekly list.
- £5 million with Money Market Funds

Creditworthiness.

Significant levels of downgrades to Short and Long-Term credit ratings have not materialised since the crisis in March 2020. In the main, where they did change, any alterations were limited to Outlooks. Nonetheless, when setting minimum sovereign debt ratings, this Council will not set a minimum rating for the UK.

CDS prices

Although bank CDS prices, (these are market indicators of credit risk), spiked upwards during the days of the Truss/Kwarteng government in the autumn of 2022, they have returned to more average levels since then. However, sentiment can easily shift, so it will remain important to undertake continual monitoring of all aspects of risk and return in the current circumstances. MUFG Corporate Markets monitor CDS prices as part of their creditworthiness service to local authorities and the Council has access to this information via its MUFG Corporate Markets-provided Passport portal.

Limits

Due care will be taken to consider the exposure of the Council's total investment portfolio to non-specified investments, countries, groups and sectors.

- a. **Non-specified treasury management investment limit.** The Council has determined that it will not engage in non-specified treasury management investments.
- b. **Country limit.** The Council has determined that it will only use approved counterparties from the UK and from countries with a **minimum sovereign credit rating of AA-** from Fitch (*or equivalent*). The list of countries that qualify using this credit criteria as at the date of this report are shown in Appendix 5.6. This list will be added to, or deducted from, by officers should ratings change in accordance with this policy.

Other limits. In addition: -

- no more than 5% will be placed with any non-UK country at any time;
- limits in place above will apply to a group of companies/institutions;
- sector limits will be monitored regularly for appropriateness.

4.3 Investment Strategy

In-house funds. Investments will be made with reference to the core balance and cashflow requirements and the outlook for short-term interest rates (i.e., rates for investments up to 12 months). Greater returns are usually obtainable by investing for longer periods. The current shape of the yield curve suggests that rates can be expected to fall throughout 2026, but only if the CPI measure of inflation maintains a downwards trend towards the Bank of England's 2% target. Rates may be cut quicker than expected if the economy stagnates.

Accordingly, while most cash balances are required in order to manage the ups and downs of cashflow, where cash sums can be identified that could be invested for longer periods, the value to be obtained from longer-term investments will be carefully assessed.

Investment returns expectations.

The current forecast shown in paragraph 3.3, includes a forecast for Bank Rate to fall to a low of 3.25% in 2026.

The suggested budgeted investment earnings rates for returns on investments placed for periods up to about three months during each financial year were updated on 22 December 2025 and are as follows: -

<i>Average earnings in each year</i>	<i>Now %</i>	<i>Previously %</i>
2025/26 (residual)	3.80	3.90
2026/27	3.40	3.60
2027/28	3.30	3.30
2028/29	3.30	3.50
2029/30	3.50	3.50
Years 6-10	3.50	3.50
Years 10+	3.50	3.50

Caution must be exercised in respect of all interest rate forecasts.

For its cashflow generated balances, the Council will seek to utilise its business reserve instant access and notice accounts, Money Market Funds, Ultra-Short Dated Bond Funds and short-dated deposits, (overnight to six months), in order to benefit from the compounding of interest.

Changes of investment strategy

There are no fundamental changes to the Investment Strategy when compared to the Strategy in place during 2025/26.

Investment treasury indicator and limit - total principal funds invested for greater than 365 days. These limits are set with regard to the Council's liquidity requirements and to reduce the need for early sale of an investment and are based on the availability of funds after each year-end.

The Council is asked to approve the following treasury indicator and limit: -

Upper limit for principal sums invested for longer than 365 days				
£000	2025/26	2026/27	2027/28	2028/29
Principal sums invested for longer than 365 days	£2,000	£2,000	£2,000	£2,000
Current investments as at 31 st December 2025 in excess of 1 year maturing in each year	0	0	0	0

4.4 Investment Performance / Risk Benchmarking

These benchmarks are simple guides to maximum risk, so they may be breached from time to time, depending on movements in interest rates and counterparty criteria. The purpose of the benchmark is that officers will monitor the current and trend position and amend the operational strategy to manage risk as conditions change. Any breach of the benchmarks will be reported, with supporting reasons in the mid-year or Annual Report.

Security - The Council's main priority is the security of its capital, and therefore security risk continues to be its main focus, with the process for securing this detailed in Section 4.1 of this report.

This is measured / benchmarked by the use of a Historic Risk of Default calculation provided to us by Link Asset Services. The calculation is a proxy for the average percentage risk for each investment based on over 30 years of data provided by Fitch, Moody's and S&P. It simply provides a calculation of the possibility of average default against the historical default rates, adjusted for the time period within each year according to the maturity of the investment. At the end of November 2025 our calculated Historic Risk of Default was 0.006% as our cash was in either Money Market Funds, deposits with appropriately rated banks and a liquid call account with NatWest. As this situation is not expected to change in 2026/27, then the risk remains very small.

Liquidity – in respect of this area the Council seeks to maintain: -

- No Bank overdraft
- Liquid short-term deposits of at least £5m available with a week's notice.

Yield - local measures of yield benchmarks are

- Investments – internal returns above the 7-day SONIA compounded rate

4.5 End of Year Investment Report

At the end of the financial year, the Council will report on its investment activity as part of its Annual Treasury Report.

5 APPENDICES

1. Prudential and treasury indicators
2. Economic background
3. Treasury management practice 1 – credit and counterparty risk management
4. Approved countries for investments
5. Treasury management scheme of delegation
6. The treasury management role of the section 151 officer

5.1 THE CAPITAL PRUDENTIAL AND TREASURY INDICATORS 2026/27 – 2028/29

The Council's capital expenditure plans are the key driver of treasury management activity. The output of the capital expenditure plans is reflected in the prudential indicators, which are designed to assist members' overview and confirm capital expenditure plans.

5.1.1 Affordability Prudential Indicators

The previous sections cover the overall capital and control of borrowing prudential indicators, but within this framework prudential indicators are required to assess the affordability of the capital investment plans. These provide an indication of the impact of the capital investment plans on the Council's overall finances. The Council is asked to approve the following indicators: -

Ratio of Financing Costs to Net Revenue Stream

This indicator identifies the trend in the cost of capital, (borrowing and other long-term obligation costs), against the net revenue stream.

%	2024/25 Actual	2025/26 Estimate	2026/27 Estimate	2027/28 Estimate	2028/29 Estimate
Annual Charge	1.40%	9.04%	4.98%	-2.74%	-0.66%

The estimates of financing costs include current commitments and the proposals in this budget report.

5.2 ECONOMIC BACKGROUND (to 23 December 2025)

- The first half of 2025/26 saw:
 - A 0.3% pick up in GDP for the period April to June 2025. More recently, the economy flatlined in July, with higher taxes for businesses restraining growth, but picked up to 0.1% m/m in August before falling back by 0.1% m/m in September.
 - The 3m/yy rate of average earnings growth excluding bonuses has fallen from 5.5% to 4.6% in September.
 - CPI inflation has ebbed and flowed but finished September at 3.8%, whilst core inflation eased to 3.5%.
 - The Bank of England cut interest rates from 4.50% to 4.25% in May, and then to 4% in August.
 - The 10-year gilt yield fluctuated between 4.4% and 4.8%, ending the half year at 4.70% (before falling back to 4.43% in early November).
- From a GDP perspective, the financial year got off to a bumpy start with the 0.3% m/m fall in real GDP in April as front-running of US tariffs in Q1 (when GDP grew 0.7% on the quarter) weighed on activity. Despite the underlying reasons for the drop, it was still the first fall since October 2024 and the largest fall since October 2023. However, the economy surprised to the upside in May and June so that quarterly growth ended up 0.3% q/q (subsequently revised down to 0.2% q/q). Nonetheless, the 0.0% m/m change in real GDP in July, followed by a 0.1% m/m increase in August and a 0.1% decrease in September will have caused some concern. GDP growth for 2025 and 2028 is currently forecast by the Bank of England to be in the region of 1.5%.
- Sticking with future economic sentiment, the composite Purchasing Manager Index (PMI) for the UK increased to 52.2 in October. The manufacturing PMI output balance improved to just below 50 but it is the services sector (52.2) that continues to drive the economy forward. Nonetheless, the PMIs suggest tepid growth is the best that can be expected in the second half of 2025 and the start of 2026. Indeed, on 13 November we heard that GDP for July to September was 0.1% q/q.
- Turning to retail sales volumes, and the 1.5% year-on-year rise in September, accelerating from a 0.7% increase in August, marked the highest gain since April. On a monthly basis, retail sales volumes rose 0.5%, defying forecasts of a 0.2% fall, following an upwardly revised 0.6% gain in August. Household spending remains surprisingly resilient, but the headwinds are gathering.
- Prior to the November Budget, the public finances position looked weak. The £20.2 billion borrowed in September was slightly above the £20.1 billion forecast by the OBR. For the year to date, the £99.8 billion borrowed is the second highest for the April to September period since records began in 1993, surpassed only by borrowing during the COVID-19 pandemic. The main drivers of the increased borrowing were higher debt interest costs, rising government running costs, and increased inflation-linked benefit payments, which outweighed the rise in tax and National Insurance contributions.
- Following the 26 November Budget, the Office for Budget Responsibility (OBR) calculated the net tightening in fiscal policy as £11.7bn (0.3% of GDP) in 2029/30, smaller than the consensus forecast of £25bn. It did downgrade productivity growth by 0.3%, from 1.3% to 1.0%, but a lot of that influence was offset by upgrades to its near-term wage and inflation forecasts. Accordingly, the OBR judged the Chancellor was going to achieve her objectives with £4.2bn to spare. The Chancellor then chose to expand that headroom to £21.7bn, up from £9.9bn previously.
- Moreover, the Chancellor also chose to raise spending by a net £11.3bn in 2029/30. To pay for that and the increase in her headroom, she raised taxes by £26.1bn in 2029/30. The biggest revenue-raisers were the freeze in income tax thresholds from 2028/29 (+£7.8bn) and the rise in NICs on salary-sacrifice pension contributions (+£4.8bn). The increase in council tax for properties worth more than £2.0m will generate £0.4bn.

- The weakening in the jobs market looked clear in the spring. May's 109,000 m/m fall in the PAYE measure of employment was the largest decline (barring the pandemic) since the data began and the seventh in as many months. The monthly change was revised lower in five of the previous seven months too, with April's 33,000 fall revised down to a 55,000 drop. More recently, however, the monthly change was revised higher in seven of the previous nine months by a total of 22,000. So instead of falling by 165,000 in total since October, payroll employment is now thought to have declined by a smaller 153,000. Even so, payroll employment has still fallen in nine of the ten months since the Chancellor announced the rises in National Insurance Contributions (NICs) for employers and the minimum wage in the October 2024 Budget. The number of job vacancies in the three months to November 2025 stood at 729,000 (the peak was 1.3 million in spring 2022). All this suggests the labour market continues to loosen, albeit at a slow pace.
- A looser labour market is driving softer wage pressures. The 3m/yy rate of average earnings growth excluding bonuses has fallen from 5.5% in April to 4.6% in September. (still at that level in November). The rate for the private sector has slipped just below 4% as the year end approaches.
- CPI inflation remained at 3.8% in September but dropped to 3.2% by November. Core inflation also fell to 3.2% by November while services inflation fell to 4.4%. Nonetheless, a further loosening in the labour market and weaker wage growth may be a requisite to UK inflation coming in below 2.0% by 2027.
- An ever-present issue throughout recent months has been the pressure being exerted on medium and longer dated gilt yields. The yield on the 10-year gilt moved sideways in the second quarter of 2025, rising from 4.4% in early April to 4.8% in mid-April following wider global bond market volatility stemming from the "Liberation Day" tariff announcement, and then easing back as trade tensions began to de-escalate. By the end of April, the 10-year gilt yield had returned to 4.4%. In May, concerns about stickier inflation and shifting expectations about the path for interest rates led to another rise, with the 10-year gilt yield fluctuating between 4.6% and 4.75% for most of May. Thereafter, as trade tensions continued to ease and markets increasingly began to price in looser monetary policy, the 10-year yield edged lower, and ended June at 4.50%.
- More recently, the yield on the 10-year gilt rose from 4.46% to 4.60% in early July as rolled-back spending cuts and uncertainty over Chancellor Reeves' future raised fiscal concerns. Although the spike proved short lived, it highlighted the UK's fragile fiscal position. In an era of high debt, high interest rates and low GDP growth, the markets are now more sensitive to fiscal risks than before the pandemic. During August, long-dated gilts underwent a particularly pronounced sell-off, climbing 22 basis points and reaching a 27-year high of 5.6% by the end of the month. While yields have since eased back, the market sell-off was driven by investor concerns over growing supply-demand imbalances, stemming from unease over the lack of fiscal consolidation and reduced demand from traditional long-dated bond purchasers like pension funds. For 10-year gilts, by late September, sticky inflation, resilient activity data and a hawkish Bank of England kept yields elevated over 4.70% although by late December had fallen back again to a little over 4.50%.
- The FTSE 100 fell sharply following the "Liberation Day" tariff announcement, dropping by more than 10% in the first week of April - from 8,634 on 1 April to 7,702 on 7 April. However, the de-escalation of the trade war coupled with strong corporate earnings led to a rapid rebound starting in late April. As a result, the FTSE 100 ended June at 8,761, around 2% higher than its value at the end of March and more than 7% above its level at the start of 2025. Since then, the FTSE 100 has enjoyed a further 4% rise in July, its strongest monthly gain since January and outperforming the S&P 500. Strong corporate earnings and progress in trade talks (US-EU, UK-India) lifted share prices and the index hit a record 9,321 in mid-August, driven by hopes of peace in Ukraine and dovish signals from Fed Chair Powell. September proved more volatile and the FTSE 100 closed September at 9,350, 7% higher than at the end of Q1 and 14% higher since the start of 2025. Future performance will likely be

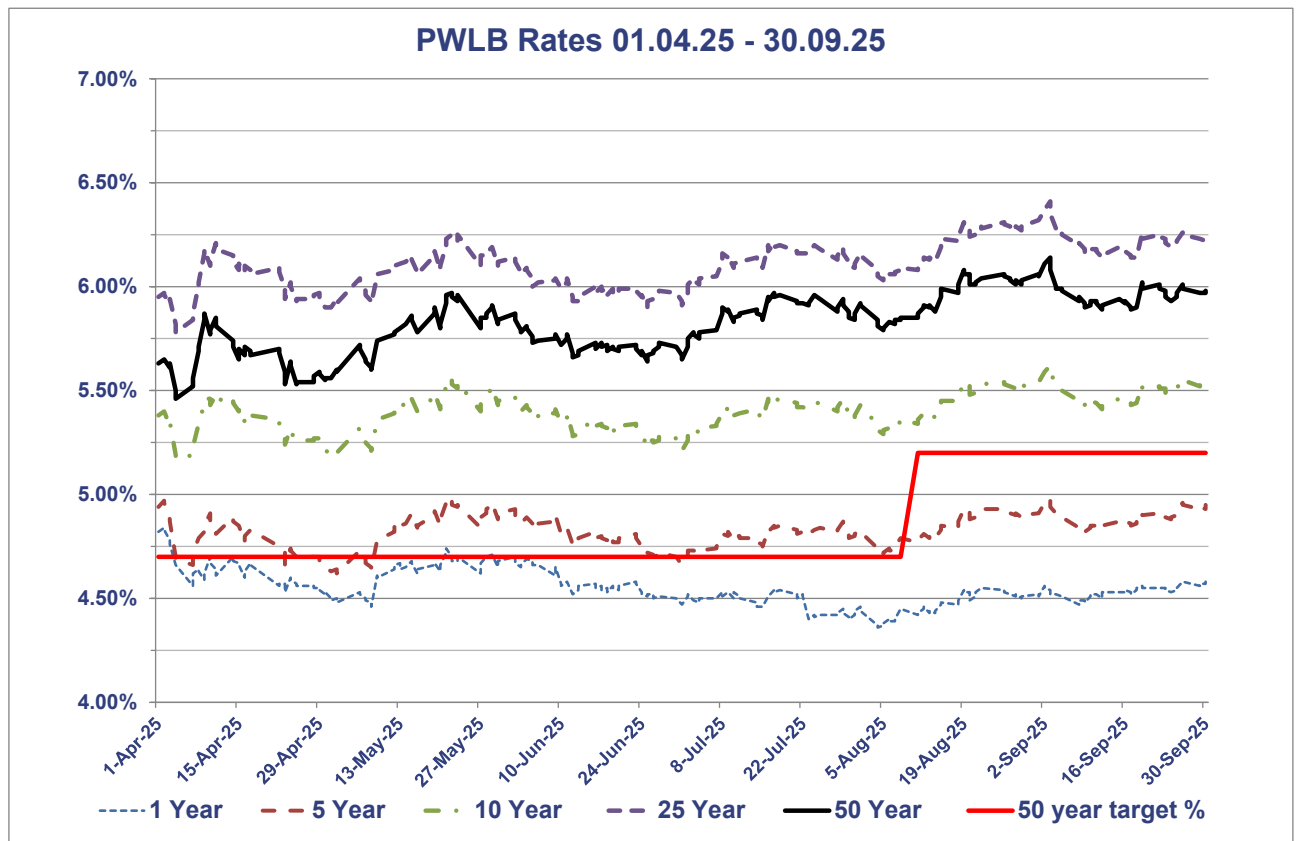
impacted by the extent to which investors' global risk appetite remains intact, Fed rate cuts, resilience in the US economy, and AI optimism. A weaker pound will also boost the index as it inflates overseas earnings. In early November, the FTSE100 climbed to a record high just above 9,900. By late December, the index had clung on to most of those gains standing at 9,870 on 23 December.

MPC meetings: 8 May, 19 June, 7 August, 18 September, 6 November, 18 December 2025

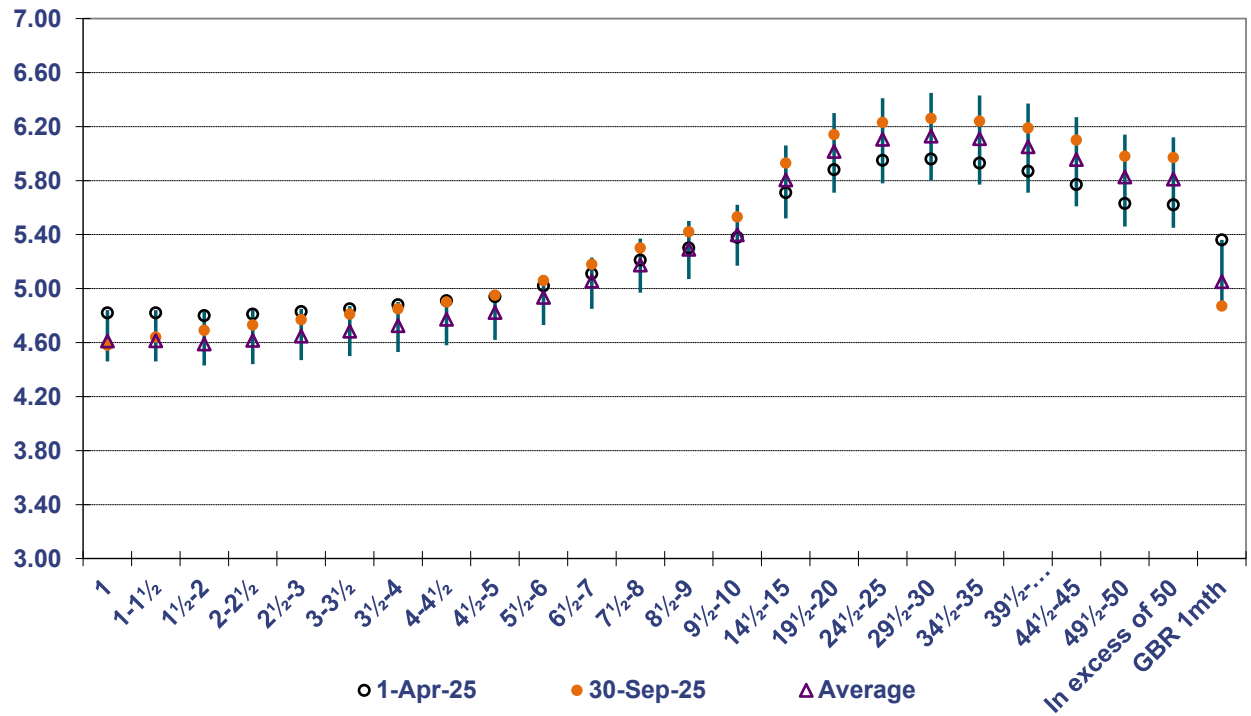
There were six Monetary Policy Committee (MPC) meetings held between April and December. In May, the Committee cut Bank Rate from 4.50% to 4.25%, while in June policy was left unchanged. In June's vote, three MPC members (Dhingra, Ramsden and Taylor) voted for an immediate cut to 4.00%, citing loosening labour market conditions. The other six members were more cautious, as they highlighted the need to monitor for "signs of weak demand", "supply-side constraints" and higher "inflation expectations", mainly from rising food prices. By repeating the well-used phrase "gradual and careful", the MPC continued to suggest that rates would be reduced further.

- In August, a further rate cut was implemented. However, a 5-4 split vote for a rate cut to 4% laid bare the different views within the Monetary Policy Committee, with the accompanying commentary noting the decision was "finely balanced" and reiterating that future rate cuts would be undertaken "gradually and carefully". Ultimately, Governor Bailey was the casting vote for a rate cut but with the CPI measure of inflation expected to reach at least 4% later this year, the MPC was wary of making any further rate cuts until inflation begins its slow downwards trajectory back towards 2%.
- With wages still rising by just below 5%, it was no surprise that the September meeting saw the MPC vote 7-2 for keeping rates at 4% (Dhingra and Taylor voted for a further 25bps reduction). Moreover, the Bank also took the opportunity to announce that they would only shrink its balance sheet by £70bn over the next 12 months, rather than £100bn. The repetition of the phrase that "a gradual and careful" approach to rate cuts is appropriate suggested the Bank still thought interest rates will fall further.
- At the 6 November meeting, Governor Bailey was once again the deciding vote, keeping Bank Rate at 4% but hinting strongly that a further rate cut was imminent if data supported such a move. By 18 December, with November CPI inflation having fallen to 3.2%, and with Q2 GDP revised down from 0.3% q/q to only 0.2% q/q, and Q3 GDP stalling at 0.1%, the MPC voted by 5-4 to cut rates further to 3.75%. However, Governor Bailey made it clear that any further reductions would require strong supporting data, and the pace of any further decreases would be slow compared to recent months. The markets expect Bank Rate to next be cut in April.

PWLB RATES 01.04.25 - 30.09.25



PWLB Certainty Rate Variations 01.04.25 to 30.09.25



HIGH/LOW/AVERAGE PWLB RATES FOR 01.04.25 – 30.09.25

	1 Year	5 Year	10 Year	25 Year	50 Year
01/04/2025	4.82%	4.94%	5.38%	5.95%	5.63%
30/09/2025	4.58%	4.95%	5.53%	6.23%	5.98%
Low	4.36%	4.62%	5.17%	5.78%	5.46%
Low date	04/08/2025	02/05/2025	02/05/2025	04/04/2025	04/04/2025
High	4.84%	4.99%	5.62%	6.41%	6.14%
High date	02/04/2025	21/05/2025	03/09/2025	03/09/2025	03/09/2025
Average	4.55%	4.82%	5.40%	6.11%	5.83%
Spread	0.48%	0.37%	0.45%	0.63%	0.68%

5.3 TREASURY MANAGEMENT PRACTICE – CREDIT AND COUNTERPARTY RISK MANAGEMENT OPTION 1

SPECIFIED INVESTMENTS: All such investments will be sterling denominated, with **maturities up to a maximum of 1 year**, meeting the minimum ‘high’ quality criteria where applicable. (Non-specified investments which would be specified investments apart from originally being for a period longer than 12 months, will be classified as being specified once the remaining period to maturity falls to under twelve months.)

NON-SPECIFIED INVESTMENTS: These are any investments which do not meet the specified investment criteria. The Council will not engage in any non-specific investments.

SPECIFIED INVESTMENTS

A variety of investment instruments will be used, subject to the credit quality of the institution, and depending on the type of investment made, it will fall into one of the above categories.

The criteria, time limits and monetary limits applying to institutions or investment vehicles are:

	Minimum credit criteria / colour band	** Max % of total investments / £ limit per institution	Max. maturity period
DMADF – UK Government	Yellow	100%	6 months (max. is set by the DMO*)
UK Gilts	Yellow		5 years
Money Market Funds CNAV	AAA	100%	Liquid
Money Market Funds LNAV	AAA		Liquid
Money Market Funds VNAV	AAA		Liquid
Ultra-Short Dated Bond Funds with a credit score of 1.25	AAA	100%	Liquid
Ultra-Short Dated Bond Funds with a credit score of 1.5	AAA	100%	Liquid
Local Authorities	Yellow	100%	5 years
Term Deposits with Housing Associations	Blue Orange Red Green No Colour		12 months 12 months 6 months 100 days Not for use

* DMO – is the Debt Management Office of HM Treasury

5.4 APPROVED COUNTRIES FOR INVESTMENTS

This list is based on those countries which have sovereign ratings of AA- or higher, (we show the lowest rating from Fitch, Moody's and S&P) and also, (except - at the time of writing - for Hong Kong and Luxembourg), have banks operating in sterling markets which have credit ratings of green or above in the MUFG Corporate Markets creditworthiness service.

Based on lowest available rating (as at 23.12.25)

AAA

- Australia
- Denmark
- Germany
- Netherlands
- Norway
- Singapore
- Sweden
- Switzerland

AA+

- Canada
- U.S.A.

AA

- Abu Dhabi (UAE)
- Finland
- Qatar

AA-

- **U.K.**

A+

- Belgium
- France

5.5 TREASURY MANAGEMENT SCHEME OF DELEGATION

(i) Full council

- receiving and reviewing reports on treasury management policies, practices and activities;
- approval of annual strategy.

(ii) Finance and Assets committees

- approval of/amendments to the organisation's adopted clauses, treasury management policy statement and treasury management practices;
- budget consideration and approval;
- approval of the division of responsibilities;
- receiving and reviewing regular monitoring reports and acting on recommendations;
- approving the selection of external service providers and agreeing terms of appointment.

(iii) Director, Finance (as the person with responsibility for the treasury function)

- reviewing the treasury management policy and procedures and making recommendations to the responsible body.

5.6 THE TREASURY MANAGEMENT ROLE OF THE SECTION 151 OFFICER

The S151 (responsible) officer

- recommending clauses, treasury management policy/practices for approval, reviewing the same regularly, and monitoring compliance;
- submitting regular treasury management policy reports;
- submitting budgets and budget variations;
- receiving and reviewing management information reports;
- reviewing the performance of the treasury management function;
- ensuring the adequacy of treasury management resources and skills, and the effective division of responsibilities within the treasury management function;
- ensuring the adequacy of internal audit, and liaising with external audit;
- recommending the appointment of external service providers.
- preparation of a Capital Strategy to include capital expenditure, capital financing, non-financial investments and treasury management, with a long-term timeframe (*say 20+ years – to be determined in accordance with local priorities.*)
- ensuring that the Capital Strategy is prudent, sustainable, affordable and prudent in the long term and provides value for money
- ensuring that due diligence has been carried out on all treasury and non-financial investments and is in accordance with the risk appetite of the Council
- ensure that the Council has appropriate legal powers to undertake expenditure on non-financial assets and their financing
- ensuring the proportionality of all investments so that the Council does not undertake a level of investing which exposes the Council to an excessive level of risk compared to its financial resources
- ensuring that an adequate governance process is in place for the approval, monitoring and ongoing risk management of all non-financial investments and long-term liabilities
- provision to members of a schedule of all non-treasury investments including material investments in subsidiaries, joint ventures, loans and financial guarantees
- ensuring that members are adequately informed and understand the risk exposures taken on by the Council
- ensuring that the Council has adequate expertise, either in house or externally provided, to carry out the above
- creation of Treasury Management Practices which specifically deal with how non treasury investments will be carried out and managed, to include the following: -
 - *Risk management (TMP1 and schedules), including investment and risk management criteria for any material non-treasury investment portfolios;*
 - *Performance measurement and management (TMP2 and schedules), including methodology and criteria for assessing the performance and success of non-treasury investments;*
 - *Decision making, governance and organisation (TMP5 and schedules), including a statement of the governance requirements for decision making in relation to non-treasury investments; and arrangements to ensure that appropriate professional due diligence is carried out to support decision making;*
 - *Reporting and management information (TMP6 and schedules), including where and how often monitoring reports are taken;*
 - *Training and qualifications (TMP10 and schedules), including how the relevant knowledge and skills in relation to non-treasury investments will be arranged.*