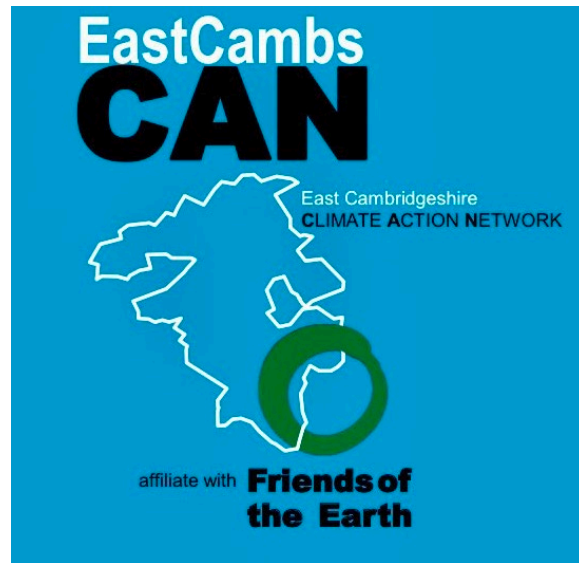
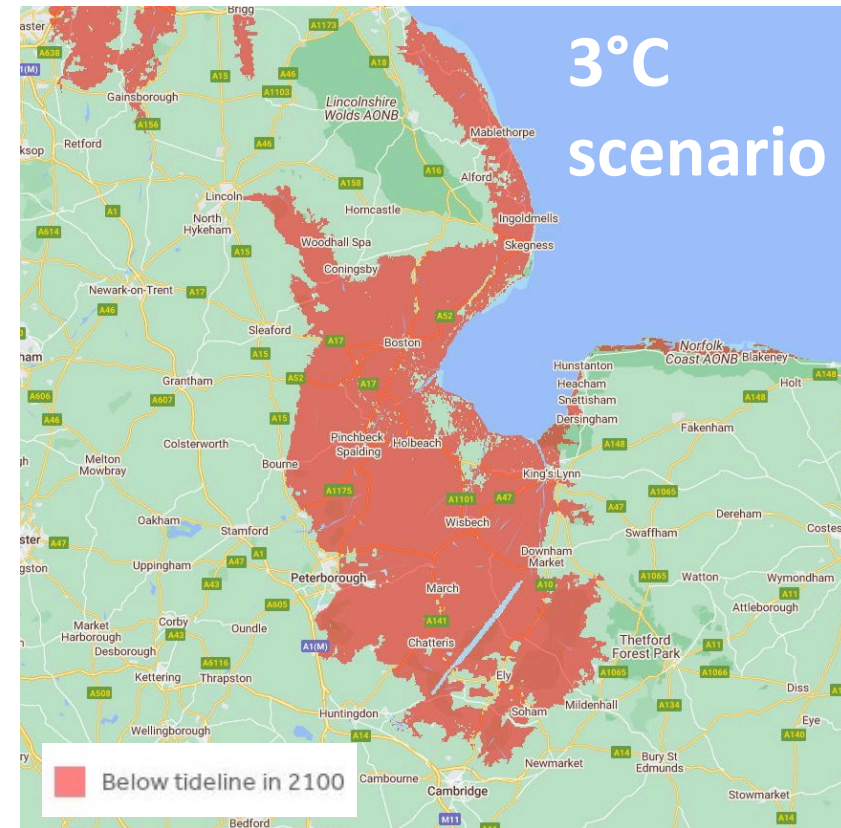


How Parish Councils have a Key Role in Climate action in East Cambs



Jethro Gauld
East Cambs CAN Co-Chair



EastCams **CAN**



affiliate with **Friends of the Earth**

About US

Our mission Statement:

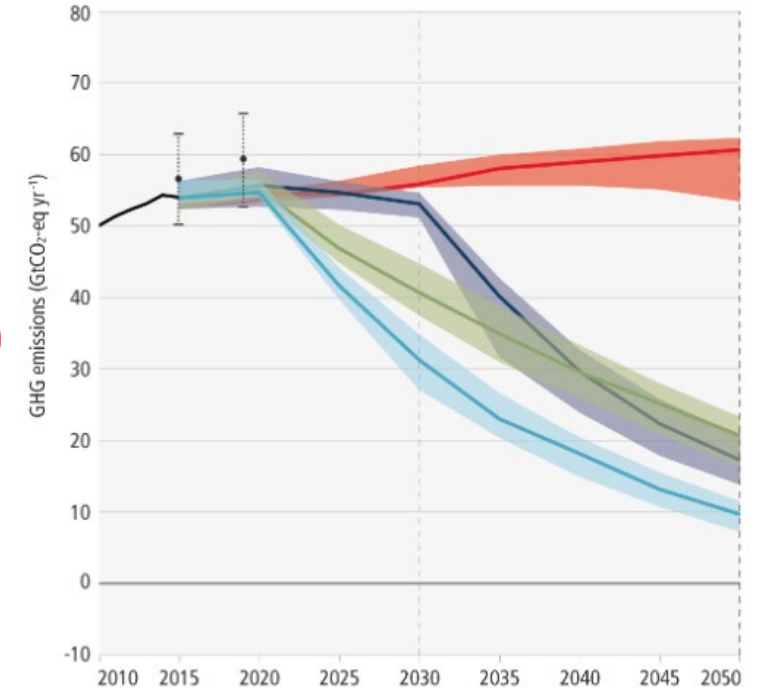
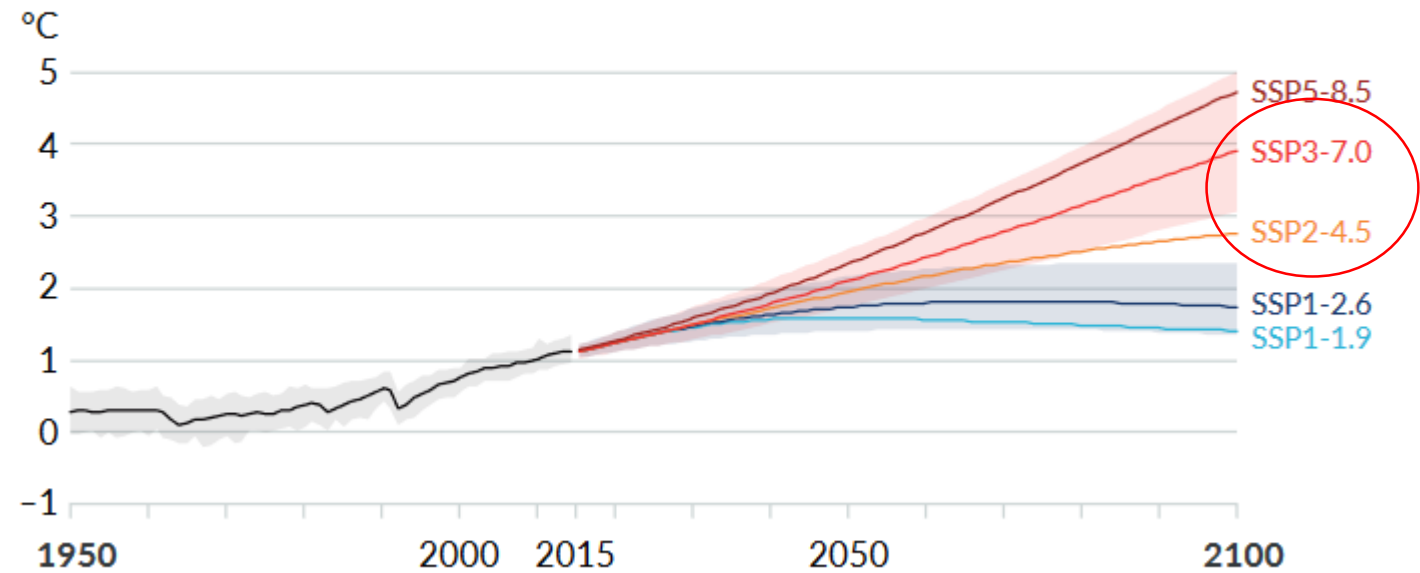
East Cams Climate Network are here to say yes we CAN! to climate action locally. We are a group focused on practical, local actions to speed up the transition away from fossil fuels toward a zero carbon society powered by locally generated, clean renewable energy.

#ChangeWithUs

eastcambscan@yahoo.com

Our Current Trajectory (IPCC AR6)






(a) Global surface temperature change relative to 1850–1900



Modelled pathways:

- Trend from implemented policies
- Limit warming to 2°C (>67%) or return warming to 1.5°C (>50%) after a high overshoot, NDCs until 2030
- Limit warming to 2°C (>67%)
- Limit warming to 1.5°C (>50%) with no or limited overshoot
- Past GHG emissions and uncertainty for 2015 and 2019 (dot indicates the median)



	1.5°C	2°C	IMPACT of 2°C compared to 1.5°C
 LOSS OF PLANT SPECIES	8% of plants will lose 1/2 their habitable area	16% of plants will lose 1/2 their habitable area	> 2x worse
 LOSS OF INSECT SPECIES	6% of insects will lose 1/2 their habitable area	18% of insects will lose 1/2 their habitable area	> 3x worse
 FURTHER DECLINE IN CORAL REEFS	70% to 90%	99%	> up to 29% worse
 EXTREME HEAT	14% of the global population exposed to severe heat every 1 in 5 years	37% of the global population exposed to severe heat every 1 in 5 years	> 2.6x worse
 SEA-ICE-FREE SUMMERS IN THE ARCTIC	At least once every 100 years	At least once every 10 years	> 10x worse

The Local Picture: big 3



Transport

44% CO₂
Emissions



Heating/Buildings

22% CO₂
Emissions



Land Use/Peat

~5521kt
CO₂
Emissions

Source, Cambridgeshire Climate Commission (2020):

https://f.hubspotusercontent40.net/hubfs/6985942/CLIMATE%20COMMISSION%20REPORT_Final.pdf

Our Climate Asks for Parish Councils

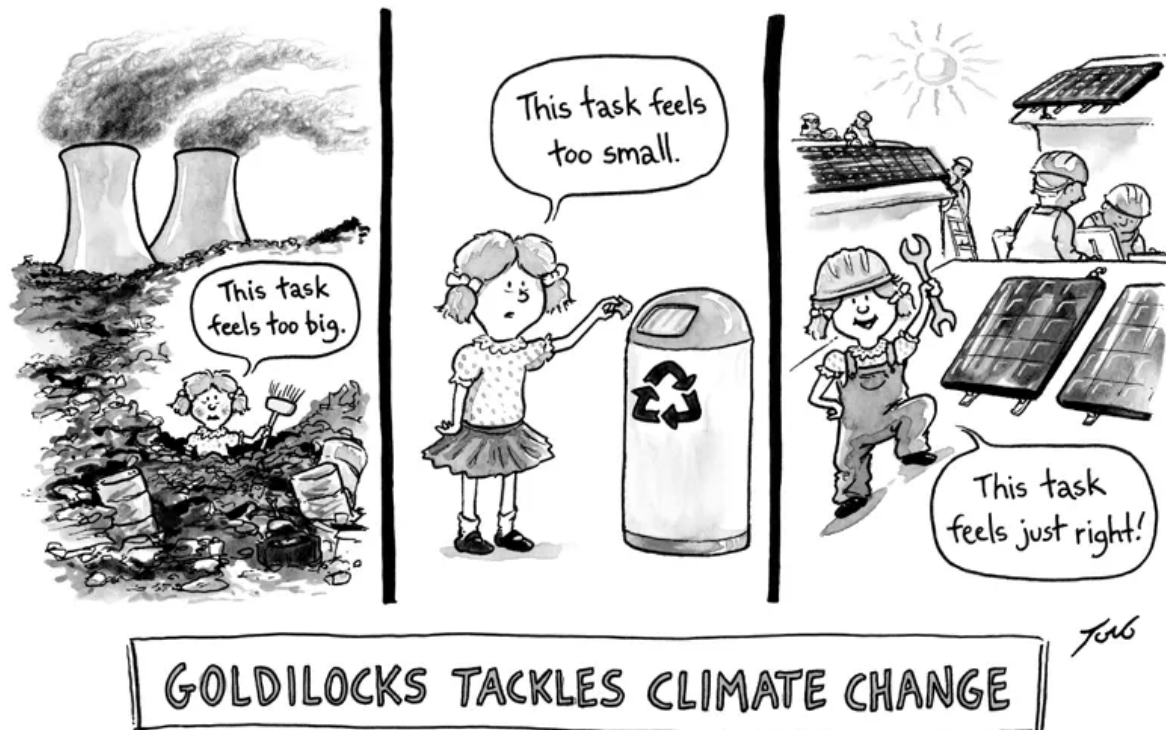


Image Source: <https://yaleclimateconnections.org/2020/05/what-can-i-realistically-do-about-climate-change/>

- Declare a climate emergency.
- Work with us to improve EV charging infrastructure locally.
- Incorporate renewables, active travel and energy efficiency into Neighbourhood Plans.
- Publicly state support for divestment from fossil fuels.
- Support ecosystem restoration locally.

