

Natalie Lambert
Cambridge Nature Network
Officer

A local charity that cares about the Cambridge area
and its green landscapes



Why do we need one?

What is it? Where is it?

Who is involved?

What can you do?

www.cambridgenaturenetwork.org



Why do we need a Cambridge Nature Network?

- Global biodiversity crisis, declared locally in City and South Cambs.
- Cambridge area habitats = too poor quality, too small and too isolated.
- Cambs also scores poorly for access to nature and getting worse.
- Can help nature recover, increase access to nature (health and wellbeing) increase ecosystem services and support prosperity.

What is the Cambridge Nature Network?

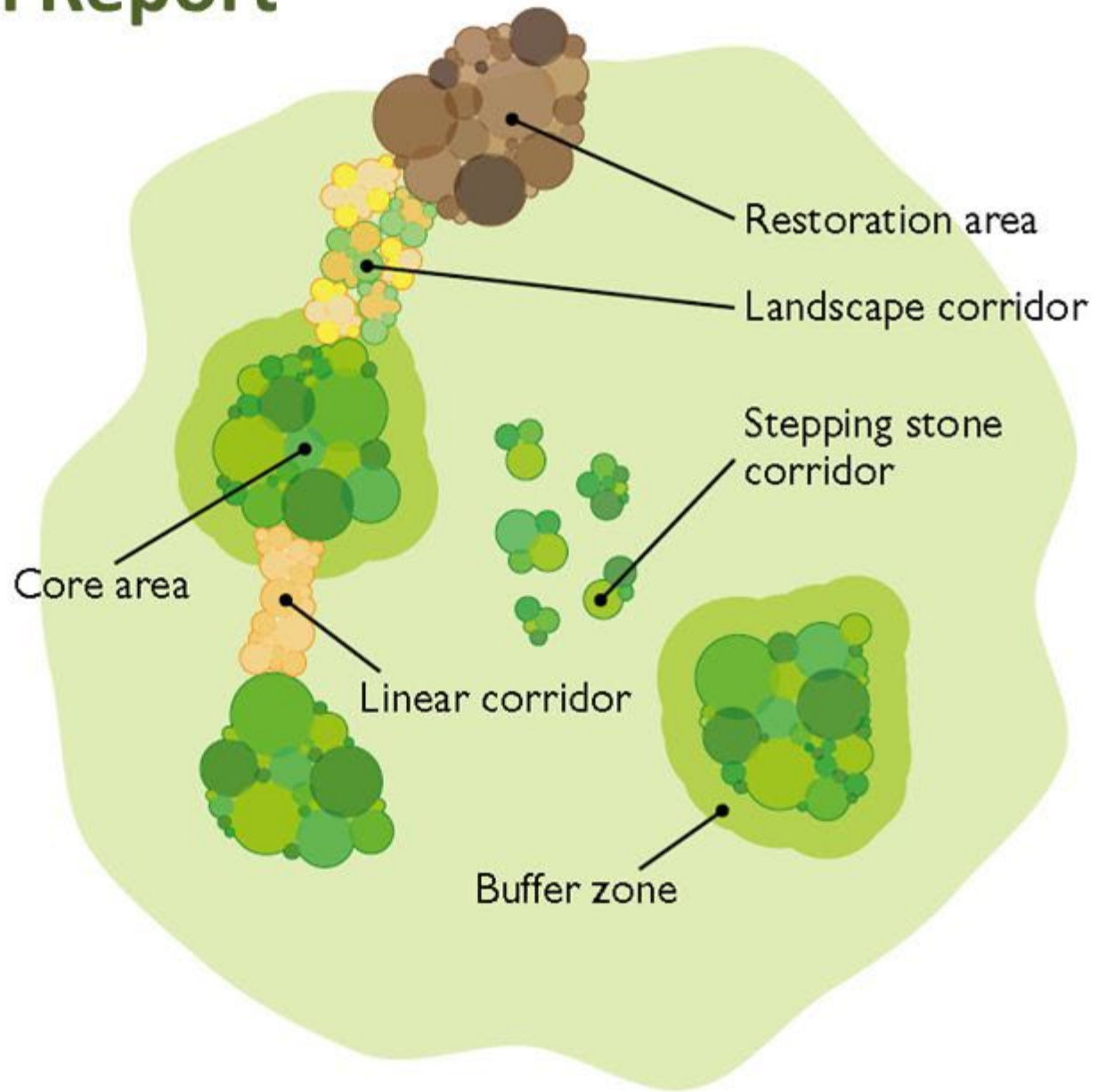
- Local nature recovery network within a 10km radius of Cambridge.
- Clusters of larger areas of natural habitat that are linked together.
- Based on research report and ecological principles at a landscape scale
 - Bigger, better, more joined up



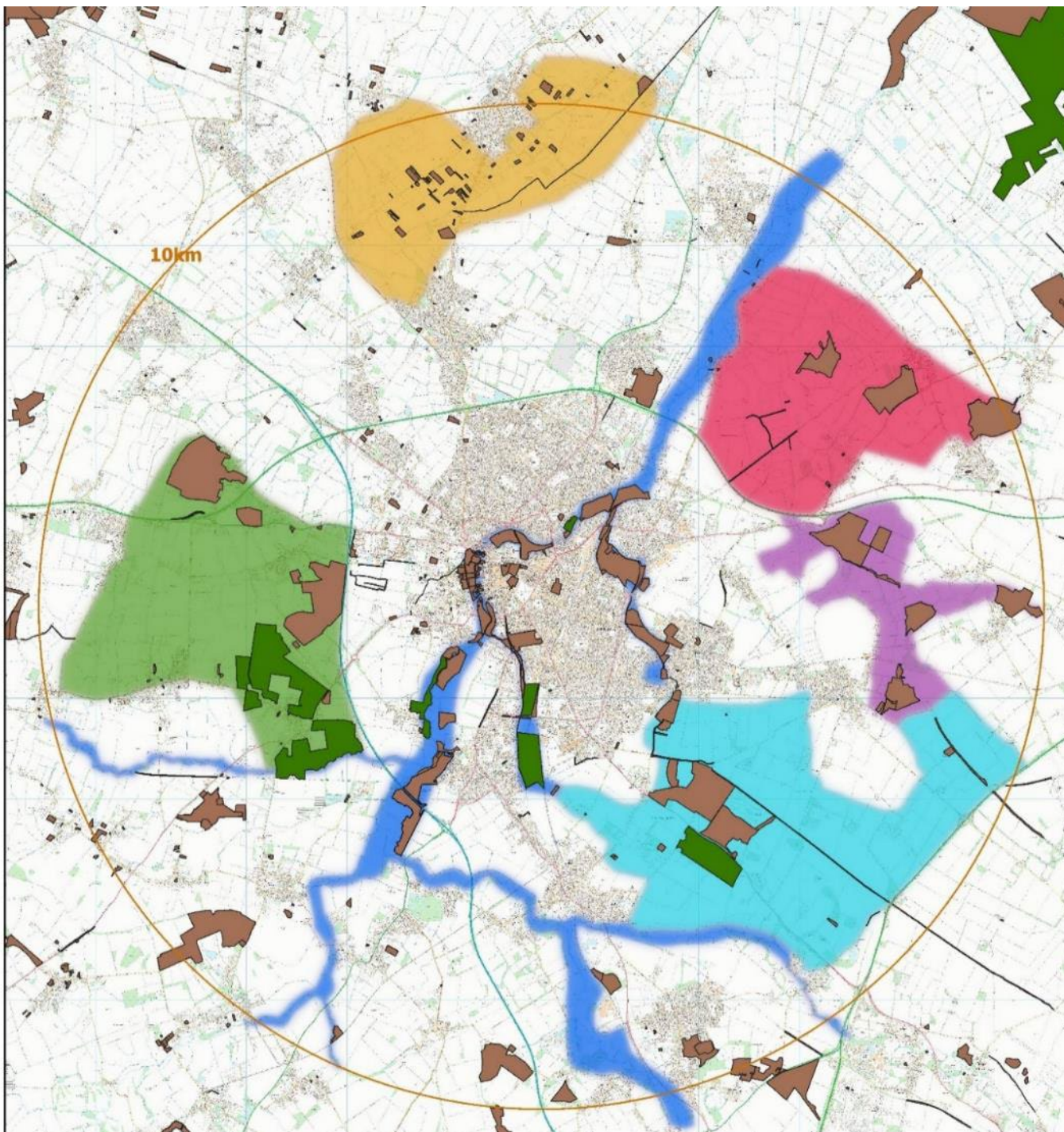
The Lawton Report

- Bigger
- Better
- Connected

Put the
Right Habitat
in the
Right Place



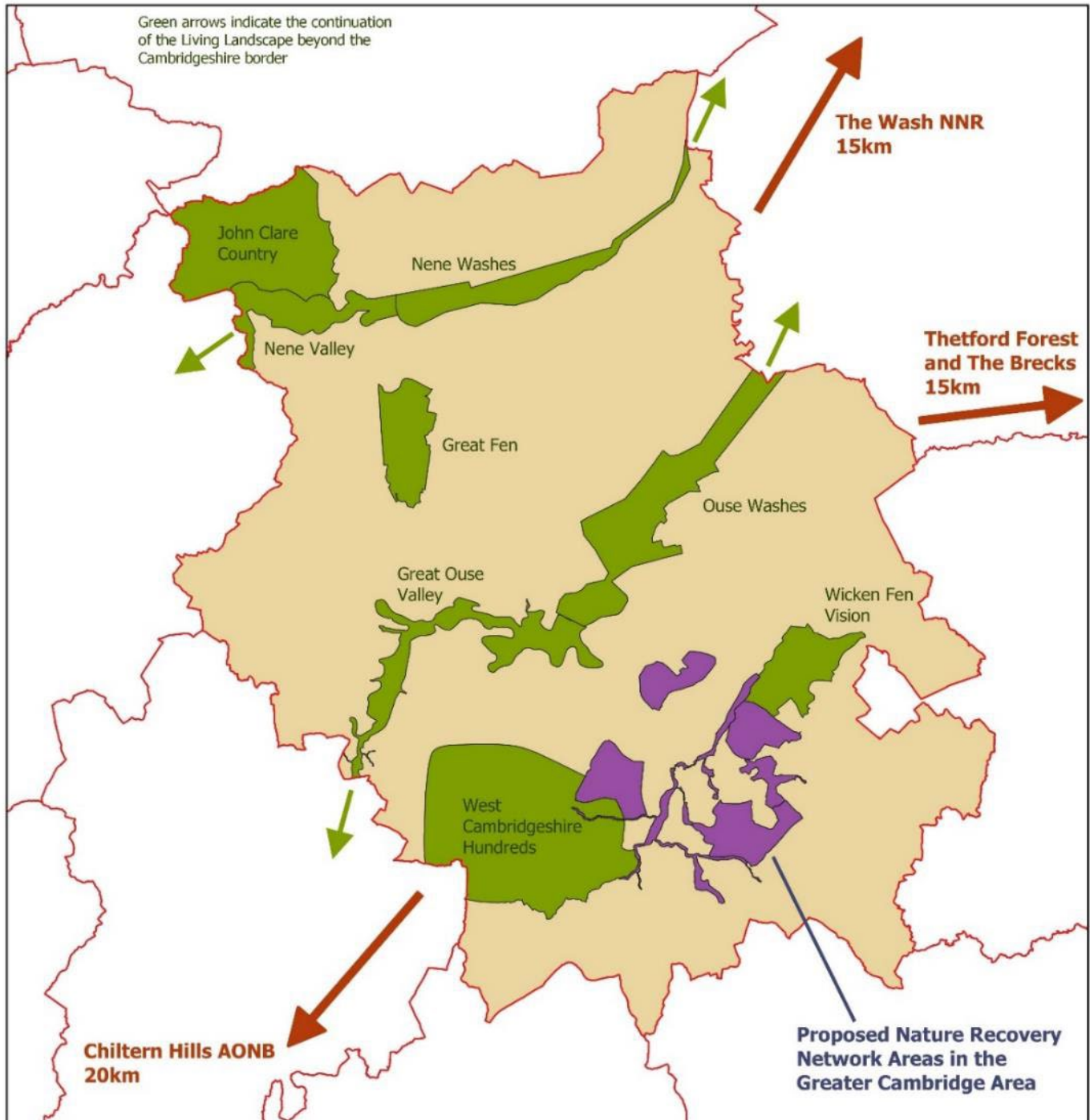
Where?



Nature Recovery Network

- Gog Magog Hills Priority Area
- Cambridge Fens Priority Area
- Boulder Clay and Woodlands Priority Area
- River Cam Corridor Priority Area
- Wicken Fen Vision South Priority Area
- Fen-edge Orchards and Drovers Opportunity Area

- Sites with designation for nature (not all accessible)
- Accessible Natural Greenspace without designation



Who?

- Farming Landowners/managers – nature friendly farming
- Nature spaces owners/managers (City, County, NGOs)
- Local planning authorities/Govt agencies (policy support, funding?)
- Businesses
- Communities/Parishes
- Individuals

What has happened so far?

- **Policy support:** Local Plan, Cambridge Biodiversity Strategy
- **Nature friendly farming:** Support, advice, clusters
- **Project pipeline/call for projects**



Volunteer tree planting day at Logan's Meadow – 250 trees planted



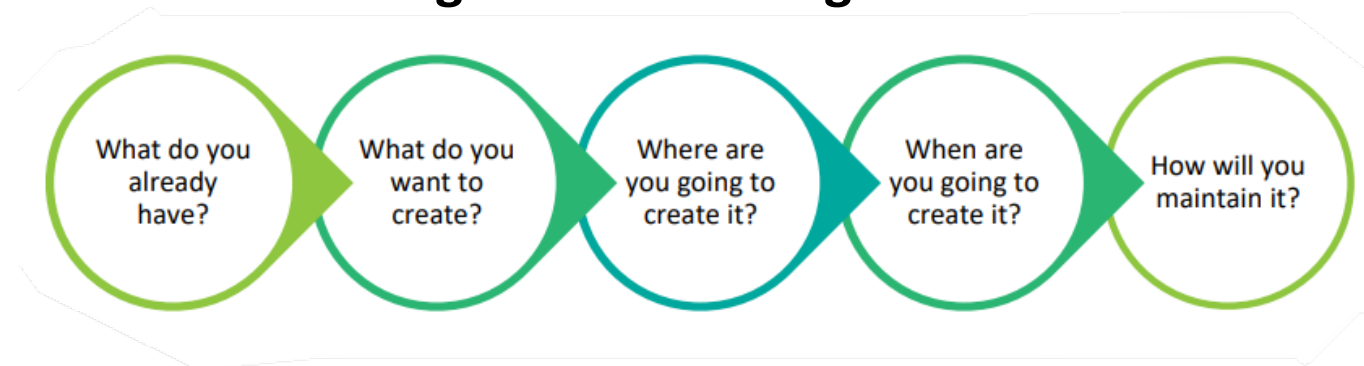
Arbury Primary School – bee banks created and soil readied for wildflower seed

What can you do?

- **Maximise biodiversity** on your own land, e.g. wildlife friendly gardening and encourage your friends, family, colleagues and neighbours.
- Let your **local politicians** know that you want to see a Cambridge Nature Network and ask them what they will do to achieve it.
- **Support** a local greenspace charity. Join, volunteer, donate, leave a legacy.
- Use the **Local Nature Recovery Toolkit** to identify local action that could be taken in your parish.

How to use the Nature Recovery Toolkit

1. Make a **simple map** of wildlife habitats in your area.
2. Decide the **objectives** for your nature recovery plan.
3. Develop a **nature recovery map** that illustrates where you want to create new habitats and the existing habitats that can be improved.
4. Develop a **timeline** for habitat creation or improvement.
5. Develop a **plan for maintaining and monitoring** these habitats and the wildlife that lives there.





Cambridge Nature Festival 2022

27th May – 30th June

A selection of activities and events are listed, with many more to be added soon.

www.cambridgenaturenetwork.org/naturefestival

Email: nature@cambridgeppf.org

